



# NEWSLETTER

## Events

[WBAALAS Member Appreciation Dinner](#) January 2<sup>nd</sup>, 2016

[WBAALAS Trade Fair](#) March 23<sup>rd</sup>, 2016

[NWABR and PRIM&R IACUC Conference](#) March 30-April 2, 2016

## 2015 NATIONAL MEETING SUMMARY



Andrea S. (WBAALAS President-Elect) accepted the 1<sup>st</sup> place award for the [WBAALAS branch submission](#) to the Express Your Inner Hero Contest- a competition which raised money for the [AALAS Foundation](#). Thank you to all those who donated money to help our submission win in the branch category.

Find the official National AALAS Meeting recap [here](#).

Please consider attending next year's National AALAS meeting in Charlotte, NC from Oct 30-Nov 3<sup>rd</sup>, 2016.

## CONTENTS

<a href="#">WBAALAS Elections</a>	1
<a href="#">Wildlights Event</a>	2
<a href="#">Membership Renewal</a>	3
<a href="#">New Board Member Bios</a>	3-5
<a href="#">Editor's Message</a>	6-7
<a href="#">2016 Trade Fair</a>	8-9
<a href="#">Awards</a>	10
<a href="#">NWABR</a>	11
<a href="#">Newsletter Deadlines</a>	12
<a href="#">AALAS National Meeting</a>	13
<a href="#">Member Highlight</a>	15
<a href="#">TBR News &amp; Views</a>	16-20
<a href="#">Trustee Report</a>	21-24
<a href="#">Branch Learning Portal</a>	25
<a href="#">Members Earned Certs</a>	26-27
<a href="#">News for Members</a>	28
<a href="#">Commercial Members</a>	29
<a href="#">Institutional Members</a>	30

A big shout out and thank you to everyone who helped contribute to the newsletters for the past year!  
Without **you** this would not be possible.

# **2016 WBAALAS ELECTION RESULTS**

Congratulations to the new 2016 WBAALAS officers! Thank you for volunteering to be involved on the WBAALAS Board.

❖ President-Elect: Jennifer K.

❖ Treasurer: Amanda K.

❖ Technician Branch Representative: Marsha L.

❖ Board Member, Position 2: Sarah W.

❖ Board Member, Position 3: Kari K.

## **Newly Appointed Positions**

❖ Board Member, Position 1: Joe A.

❖ Management Information Systems Chair: Dave R.

To all the nominees and members, WBAALAS has many other opportunities to be involved. Please consider an appointed position or volunteering for one of the many committees available.

1. Program Committee
2. Newsletter Committee
3. Awards Committee
4. Membership Committee
5. Management Information Systems Committee (Website)

A complete description of these committees are located on the WBAALAS website under the "[Join](#)" tab. Please contact [secretary@wbaalas.org](mailto:secretary@wbaalas.org) for more information and details on attending our next board meeting.



# Wildlights at Woodland Park Zoo!!

**Please Join Us During Wildlights at Woodland Park Zoo for our Member Appreciation Dinner Event!!**

When: Saturday January 2nd from 5:30-9:00pm

Where: Carousel Room- at [Wildlights at the Woodland Park Zoo!](#) Seattle, WA

Includes: Free parking, entrance ticket to Wildlights, food and drinks and is family friendly!

The WBAALAS Annual Member Appreciation event is almost here! This event is FREE for current 2015 WBAALAS members as well as new 2016 Members but there is a limit to the number of members that can attend due to venue and food costs. If you would like to cover the full (\$30) or partial cost (\$5 or more) of your attendance by **paying it forward** and allow for other members to attend please contact [treasurer@wbaalas.org](mailto:treasurer@wbaalas.org) to request an invoice to pay online via PayPal.

**RSVPs are required for this event.**

**Send an email to [rsvp@wbaalas.org](mailto:rsvp@wbaalas.org) by Monday, December 21st.**

If you would like to bring members of your family for only \$10.00 per person, please indicate the number of individuals in your RSVP email besides yourself who will be attending and you will be sent an invoice to pay online via PayPal. Our event is located in the Historic Carousel Room- private party room right alongside the antique carousel horses. With a full wall of one-way-windows, your guests can look out on the festivities and beautiful lights of the Carousel while keeping your party private. There is no better place to experience the festivities of the holiday season! Described as "Seattle's wildest holiday lights festival" Wildlights includes sparkling light displays, and faux snowball fights, Santa, his reindeer and other family delights. visit <https://www.zoo.org/wildlights> for more information.

Those who are registered for the event will receive their parking information and entrance tickets via email. Any questions, please contact [secretary@wbaalas.org](mailto:secretary@wbaalas.org). We look forward to seeing you there!

**This event is sponsored by:**



Sponsor:



**lab products**

**J.S. Technology, Inc.**

## Membership Renewal

Remember to also renew your annual membership to WBAALAS via online registration on our [website](#).

The benefits of membership includes:

1. Admission to all branch events (Trade Fair, Summer Picnic, Member Appreciation Dinner)
2. Access to our branch exclusive learning portal providing educational support for earning your certifications
3. Notifications of Newsletter publications, activities and events
4. Participation in meetings, voting and holding office
5. Participation on committees

## Newly Elected WBAALAS Board Members

### Congratulations to the new 2016 WBAALAS board members!

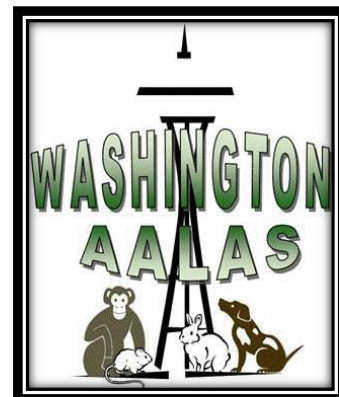
#### President Elect: Jen K.



I have been working in the lab animal field for 14 years, starting fresh out of college in cage wash and working my way up to a supervisor, along the way earning AALAS certifications, currently holding a LATG. This year I attended my first year of ILAM and am extremely excited to complete the course this next year. It has motivated me to become more active in the AALAS community especially at the local level, hopefully encouraging others to do so as well. I have been attending local branch meeting activities for most of my 14 years in the field and am excited to give back to the branch by serving on the WBAALAS board as President Elect. On a personal note, I love living in Washington and enjoying the outdoors, all seasons, from fishing to hiking to snowboarding, I could never leave!

**Treasurer: Amanda K.**

Hello Branch! I am very excited to begin my new role as Washington Branch Treasurer. I have been part of lab animal science for 15 years and the branch TBR for the last four years. I have really enjoyed the opportunity to meet so many wonderful folks and to work so closely with those seeking AALAS certification. I am looking forward to continuing to serving you, our members, in administrative roles as both Treasurer and WBAALAS Learning Portal Admin. I am also very much looking forward to coaching our newest cohort of certification candidates through their studies and exams. 2016 is going to be a great year for Washington-area lab animal science and continuing education!

**Board Member 2: Sarah W.**

I'm a professional mouse wrangler at the Fred Hutchinson Cancer Research Center. I have been working in animal labs since 2008. First at my alma mater, the University of Idaho- teaching phylogeny, and researching the neuropathy of diabetic mice; and the last 2/12 years here in Washington working in animal husbandry at SNBL and Fred Hutch.

I am dedicated to animal welfare and enriching our community. To this end, I volunteer at the Woodland Park Zoo, and I

am enrolled in graduate school through Miami University earning a Master's in biology with an emphasis on community conservation. Thank you for electing me, I am excited to serve the local branch of AALAS.

---

**Board Member 3: Kari K.**

I am excited to have the opportunity to become more involved with WBAALAS! I have enjoyed attending various WBAALAS events over the years, such as the Trade Fair and the summer picnics. I even gave a talk last year at the 2015 Trade Fair- on the care and use of swine in research. Seriously, it was one of the highlights of my year. Now I have the chance to help plan these events!



I am a laboratory animal veterinarian and work at the VA Puget Sound and also consult at various local institutes. I have had the privilege to work in this field for the past 18 years, as long as I have lived in the Ballard neighborhood of Seattle. I believe that research with laboratory animals is very important for medical progress and our supporting role in this is vital. In my spare time, I enjoy working out, playing the piano, taking walks around town, and being a rental property manager. I also have three cats, two daughters, and one husband. My favorite spectator sports are figure skating and Seahawks football. Go Hawks!

---

**The Board wishes to thank outgoing board members for their years of service to WBAALAS**

Susan B. –Treasurer

Dave R.-Past President

Denise C.-Board Member

**And appointed position:**

Tim D.-Management Information Systems Chair

*Thank You*

---

---

## Message from the Editor

---



### **Meet Andrea S.**

WBAALAS Newsletter Editor

[newsletter@wbaalas.org](mailto:newsletter@wbaalas.org)

**Please consider joining a committee at  
WBAALAS**

**Time Commitment: 1-2 hours a month**

**Where: From the comfort of your own home**

**Committees: Programs, Elections, Awards,  
Management Information Systems, Newsletter, and  
Membership**

Email: [Secretary@WBAALAS.org](mailto:Secretary@WBAALAS.org) to find out more.

### **1. Program Committee**

- Plan all Branch sponsored meetings and activities including selection and development of the topic for each meeting, selection of volunteers to present a specific program, meeting location sites, resource planning, and publicity
- Submit program and event descriptions to the Newsletter Committee for publication in the Branch newsletter, to the Management Information System Committee for publication on the Branch website, and/or request Board approval to disseminate information via email to Branch membership.

---

## **2. Nominations and Elections Committee**

- Solicit nominations of Individual Members as candidates for the office of President Elect, Secretary, Treasurer, and TBR

## **3. Awards Committee:**

- Solicit nominations for each award
- Select winners from nominees
- Contact the winners supervisor and confirm Trade Fair attendance
- Have plaques made
- Present awards at Trade Fair

## **4. Management Information System Committee:**

- Planning and acquisition of equipment, software, and supplies necessary to maintain Branch records and produce required data and reports
- Develop policies and procedures for the scheduling and proper use of the equipment and software
- Formulate or review proposed new Branch information systems
- Maintaining and updating the Branch web site including webmaster/host recommendations and security implementation
- Periodically review and propose new technology that will enhance maintenance of Branch records, required data and reports, and communication among Branch membership
- Update social media sites

## **5. Newsletter Committee:**

- The Chair of the Newsletter Committee shall also be the Newsletter Editor
- Ideas for newsletter content
- Write article summaries

## **6. Membership Committee**

- The Chair of the Membership Committee shall be the Secretary
- Carry out all activities pertaining to membership as directed by the President, such as soliciting membership, notifying delinquent dues members, prepare reports of membership for the Board of Directors and maintain membership lists

# WBAALAS Trade Fair is coming up!

Wednesday March 23rd 2016 from 8am-2pm.

Have you paid your 2016 dues yet? Trade Fair attendance is a member benefit. Pay dues now at [Join](#) and don't forget to RSVP by emailing [rsvp@wbaals.org](mailto:rsvp@wbaals.org).

## Thank you to our current 2016 Sponsors

There are still sponsorship opportunities available, see our [website](#) for more details.



## 2016 Speakers:

**Keynote Speaker:** Cindy Buckmaster, Ph.D.- Director, Center for Comparative Medicine at Baylor College of Medicine

# WBAALAS TRADE FAIR

**March, 23rd 2016 8:00am-2:00pm  
Center for Urban Horticulture**

**THE MOST EXCITING EVENT OF THE YEAR FOR  
LABORATORY ANIMAL CARE PROFESSIONALS IN  
WASHINGTON STATE**

Keynote Speaker- Cindy Buckmaster, Ph.D.- Director, Center for Comparative Medicine at Baylor College of Medicine

- ❖ Free for 2016 members! (\$20 non-members)
- ❖ Discover the latest products to make work easier and more efficient!
- ❖ Attend talks on species care, techniques, and career development!
- ❖ Attend to win a prize in the raffle!



Start your day with a continental breakfast! Enjoy a full morning of interesting and informative speakers followed by lunch. After lunch we will reveal the winners of both the Member and Technician of the Year Awards and finish off the day with ever popular raffle, courtesy of our generous commercial members.

**Email [RSVP@wbaalas.org](mailto:RSVP@wbaalas.org) to register today!**

## WBAALAS AWARDS

**Don't forget to send in your nominations by March 14<sup>th</sup>!!**

Please nominate using the [online form](#) a staff member, fellow co-worker, friend, or acquaintance in the local research community that meets the spirit and intent of each of these awards. Recipients of either of these awards receive a plaque and a \$100 check.

### **Bette J. Varnam Washington Branch Technician of the Year Award**

The Washington Branch Technician of the Year Award was re-named in 1993 as a tribute to Bette J. Varnam. Bette was an Animal Technician with the Division of Animal Medicine (now the Department of Comparative Medicine) at the University of Washington for 14 years and lost her fight with cancer in June 1991. Bette defined the true meaning of why many of us entered the field of Laboratory Animal Science and remained in it for so many years; she loved the animals and they were her first priority. Throughout her struggles and challenges, Bette never lost sight of her devotion and commitment to being an advocate for those that could not fend for themselves—the animals. The recipients' of this Award carry on a legacy of a true professional and compassionate colleague.

### **Ron Orta Washington Branch Member of the Year Award**

Washington Branch Member of the Year Award was renamed to honor of our friend and colleague who died in 2007. The Award is presented to an individual who has actively participated in the Washington Branch and encourages participation by others in activities which promote Washington Branch AALAS and laboratory animal science in general. Ron had a brilliant career in Laboratory Animal Management and later sales, but his true calling was that of a teacher. He was an active member and participant in the Washington Branch and hosted many Branch Picnics. Because of his commitment of personal time and resources he was honored as an Honorary Lifetime Washington Branch Member. Ron never excluded anyone from anything. In his world there was never an uninvited guest. Ron was very compassionate about helping and fulfilling the needs of those less fortunate. Ron mentored, encouraged, and challenged everyone to achieve high standards in animal care, facility management, self-worth and esteem. His memory continues to remain with us through this Award.



### NWABR Need for Bioexpo Mentors!

We have had a great student response this year with over 400 signed up and 267 requesting a mentor. We are working hard to recruit additional mentors, since we currently can only meet the mentor requests of 1/3 of the students. We have made improvements for the mentoring process for 2016. For example, student mentoring can take place through a variety of ways: email, phone, Skype or in person meetings. If you are interested in mentoring a high school student this year from December through April, [please complete this survey to sign up](#). For more information about the 2016 Bioexpo, [click here](#).



---

**NWABR's regional IACUC conference will be held March 31, 2016 in conjunction with the PRIM&R Conference**

PRIM&R's  
2016 **Institutional Animal Care and Use Committee**  
Conference • Bellevue, WA March 30-April 2  
Pre-conference Programs March 30 • NWABR Regional IACUC Conference March 31

## 2016 Newsletter Content Calendar

	February	July	September	December
<b>Topics</b>	Trade Fair 2016		National AALAS meeting	Summary National Meeting (photos)
	Summary from 2015			
	2015 Member Dinner Review	2016 Trade Fair Review	2016 Summer Picnic Review	2016 National AALAS Review
	President Message	President Message	President Message	President Message
<b>Member Highlights</b>	-Earned Certs -Event summaries	-2016 award recipients -Earned Certs - Event summaries	-Earned Certs - Event summaries	-Earned Certs - Event summaries
<b>Special Reports (TBR, AALAS)</b>				
<b>Events</b>	- D8 meeting info -Trade Fair info -IACUC 2016 (NWABR conference) info	Summer Picnic	National AALAS	Member Dinner

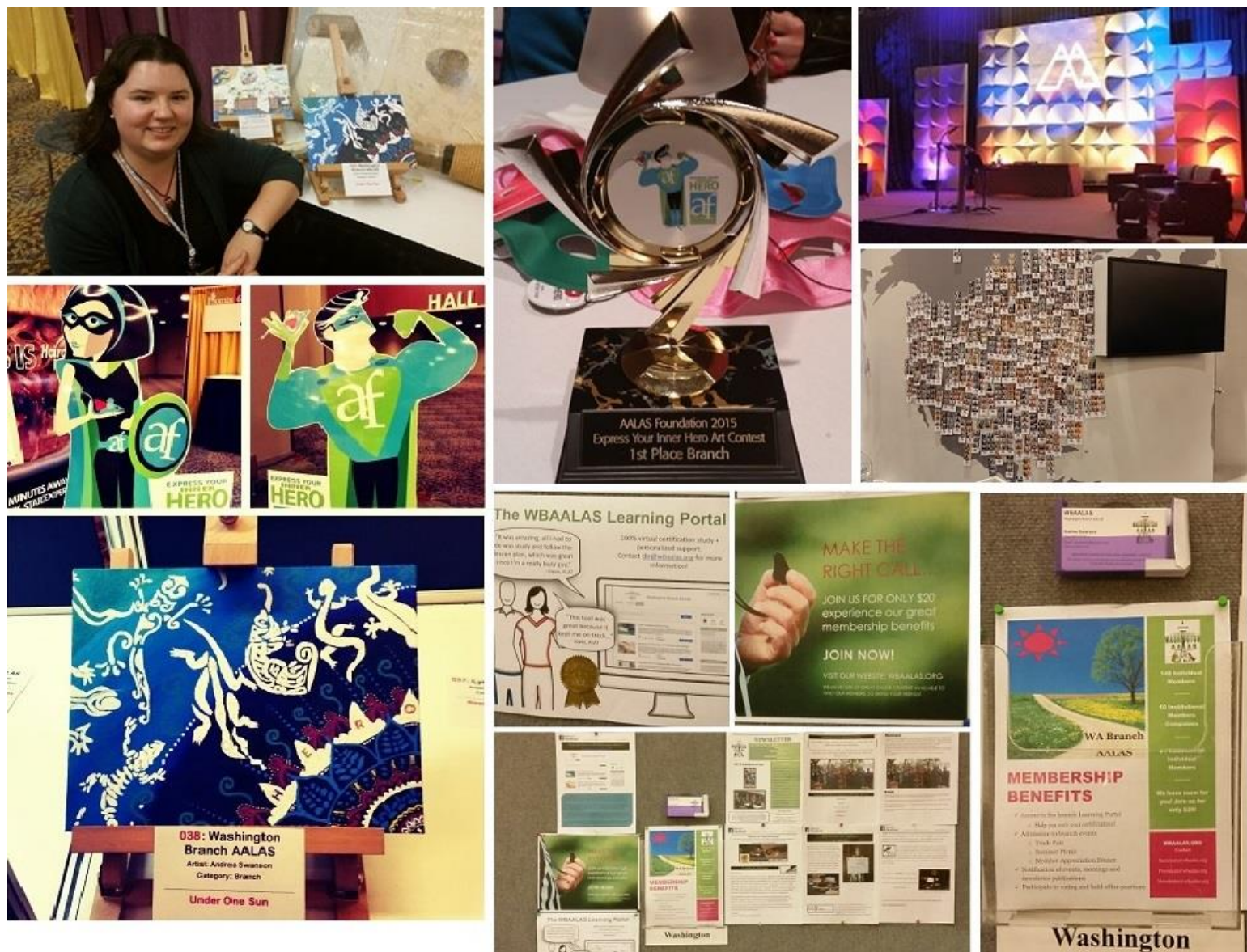
## 2016 Submission Deadlines

Main Topic	Issue Month	Article Submission Deadline
Trade Fair	February	January 30th
Member Picnic	July	June 25th
National meeting	September	August 27th
Member Dinner	December	November 19th

# 66<sup>th</sup> National AALAS Meeting 2016

A photo recap of our branch activities during National AALAS meeting in Phoenix, AZ!

Thank you to everyone who participated.



**Figure Description: WA Branch submission won the branch category of the AALAS Foundation Contest - *Express Your Inner Hero* during the 66<sup>th</sup> National AALAS Meeting in Phoenix, AZ. Also, our branch information was on bulletin board display.**

## Charles River Short Course 30<sup>th</sup> Anniversary

# IT'S LIKE A FACELIFT WITHOUT ALL THE NASTY GOSSIP.

	<p>June 27-30, 2016 Providence, RI <a href="mailto:events@crl.com">events@crl.com</a></p> <p> charles river</p>
--	--

*The 2016 Short Course will be nothing like you have experienced before. Picture it: a new venue coupled with a revamped agenda that focuses on specialized topic blocks that allows you to gain more in-depth knowledge from industry leaders. For a sneak preview and to reserve your seat, go to [www.criver.com/SC2016](http://www.criver.com/SC2016)*

**Register online for the short course at [www.criver.com/sc16](http://www.criver.com/sc16)**

## Member Highlights

### University of Miami -Project Dragonfly

### Featuring: Sarah W.

FOR IMMEDIATE RELEASE, Nov. 17, 2015

WBAALAS member participates in global program



WBAALAS member Sarah W. took part in graduate

studies in Baja this past summer through Miami University's Project Dragonfly. Sarah W. of Seattle, Wash., studied the desert ecosystems of inland Baja and then traveled to the coast to explore the marine biosphere reserve at Bahía de los Ángeles, a UNESCO World Heritage site in the Sea of Cortez.

Sarah W. is a graduate student with Miami University's Earth Expeditions, a global program offering graduate courses to people from all disciplines. The program combines web-based learning with field experiences in 15 countries throughout the world. Inspired by her work in Baja, Sarah W. is now conducting a semester-long research project.



Since the program began 10 years ago, Project Dragonfly has engaged more than 1,700 people in firsthand educational and scientific research at critical conservation field sites in Africa, Australia, Asia and the Americas. New in 2016 are courses in Paraguay and Galapagos. Dragonfly is located in the department of biology at Miami University, a state university in Oxford, Ohio. Miami was established in 1809 and is listed as one of the eight original Public Ivies.

Like Project Dragonfly on Facebook at <http://www.facebook.com/PrjDragonfly>. The deadline to apply for 2016 courses is Jan. 28, 2016, at [http://www.earthexpeditions.org/15-16\\_News](http://www.earthexpeditions.org/15-16_News)

# TBR NEWS & VIEWS

Quarter 4 2015

## San Diego

The San Diego branch has just launched our new and improved website;  
<http://www.sdaalas.org/>.

We have also closed out the year with our Winter Meeting 2015 at the Marriott La Jolla and Ugly sweater contest. It was a blast at the full mingling and raffle prizes. Our winners of the ugly sweater contest received a go-pro, a Beats pill speaker, and Beats headphones.



## Southern California

---

SCBAALAS finished out the year with a fantastic holiday party at the Coco Palms Restaurant. Attendees enjoyed Cuban food and heard from Garret Shumate, Research Scientist in Tissue Material Sciences, presenting information about what tissue material science consists of and how these products go from inception to clinical use. Awards were also given to Andrea Knipe and Samantha Brims (not pictured) for Technicians of the year. James McCabe was given an honorary lifetime membership. Congrats to them all! We have an exciting year of fun and educational events coming up in 2016!



## Hawaii

---

The University of Hawaii, Manoa, Office for Research Compliance with support from NIH OLAW, recently hosted the IACUC 101/301 conference. The 101 portion focused on “The

Basics" while the IACUC 301 was a day of "Scenarios". Thanks to AAALAC, OLAW and USDA representatives as well as all who helped organize and attended this monumental event! What a success!

UH Manoa Animal and Veterinary Services Program has been preparing for AAALAC accreditation. A pre-site inspection was conducted the same week as our IACUC 101/301 conference. What a week that was! We are pleased to announce that the Animal Care and Use Program for the University of Hawaii John A. Burns School of Medicine, and the UH Cancer Center are working tirelessly in a cooperative effort to achieve this prestigious distinction which we hope to attain by early 2016.

Aloha and A Hui Hou!

## Sacramento Valley

---

The Sacramento Valley has been very busy this quarter! Starting off, the September lecture was titled "Ferrets in Flu Research" presented by Dr. Rosemary Broome. Our branch also hosted a very successful "Osmotic Mini-pump insertion Wet-Lab" (pictured below) sponsored by Alzet Osmotic Pumps and lead by Dr. Peg Hackley. With the sponsorship and donations, we only had a \$21 charge which we thought was amazing for this valuable hands-on lab. In October, we learned about mouse micro flora in Dr. Betty Ma's lecture "Mice from Routine Environmental Change". November was possibly the most unique lecture we have hosted with Dr. Bill Ferrier showing off his live falcon while presenting the



very well attended "Peregrines on South Padre Island" lecture. We are excited to announce our next in-demand wet-lab will be performing rodent vasectomies and castrations.

## Northern Rocky Mountain

Northern Rocky Mountain Branch is busy getting ready for the holidays. Washington State University just finished their AALAC site visit in October. University of Idaho is very busy as they have begun caring for their resident zebrafish colony. They will also be expanding to house cold-water fish by the 1<sup>st</sup> of the year. I would also like to congratulate Anthony Henricks on passing is ALAT test in November.

## Washington

The Washington Branch is celebrating the success of our Branch submission to the AALAS Foundations 2015 "Express Your Inner Hero" art contest. Our submission, painted by WBAALAS' talented president-elect Andrea Swanson, won the Branch category and was auctioned off to benefit the important work of the AALAS Foundation.

The election results are in! Congratulations to our 2016 Branch officers. Check out our next newsletter for Branch officer bios. Thanks to all who voted.

- President-Elect: Jennifer K.
- Treasurer: Amanda K.
- TBR: Marsha L.
- Board Member: Sarah W.
- Board Member: Kari K.



Our Member Appreciation event is going to be spectacular this year! On January 2<sup>nd</sup> we are inviting all current WBAALAS members to join us at Woodland Park Zoos Wildlights event. Described as “Seattle's wildest holiday lights festival” Wildlights includes sparkling light displays, and faux snowball fights, Santa, his reindeer and other family delights. Check out <http://wbaalas.org> for RSVP info and join us for a fantastic event that will include free parking, tickets to Wildlights and food & drinks!



Know someone working on their ALAT certification? Our 100% virtual certification study course starts in January. Technicians from the UW and Fred Hutch who used the WBAALAS Learning Portal to study for their ALAT exam this year said “This tool was great because it kept me on track...” and “It was amazing, all I had to do was study and follow the lesson plan, which was great since I'm a really busy guy.” Email [education@wbaalas.org](mailto:education@wbaalas.org) for more details.

Our latest WBAALAS Newsletter will be published soon - check it out on our website at <http://wbaalas.org/news/>. The newsletter is available as printable version so you can share it with others. Check out more pictures and stay current on Branch announcements at <https://www.facebook.com/wbaalas>. We are currently planning for 2016 events including our popular Trade Fair. Stay tuned!



## 2015 ANNUAL MEETING D8 TRUSTEE REPORT

### Greetings District 8,

I hope many of you were able to enjoy the wonderful national meeting for AALAS in Phoenix. The final attendance for this year was 4047 with about 400 on-site registrations! Arizona branch, you did a fantastic job with the local arrangements, thank you for all of your hard work!

Prior to the start of the national meeting, Morag Mackay and I attended the Board of Trustees (BOT) business meeting. The following list is business that was discussed and voted on. The minutes for the meeting have been approved and should be posted on the AALAS website ([www.aalas.org](http://www.aalas.org)) soon. To find past meeting minutes, scroll to the bottom of the sign in page and in the blue section click on *Leadership*, on that page, in the left column, you will see *BOT Minutes Archive* and in there you will find the minutes from many of the past meetings.

-Dr. Michael R. Talcott was re-appointed as the AALAS Representative to the Association for Assessment and Accreditation of Laboratory Animal Care International (AAALAC). Term of office begins 12/31/15 and ends 12/31/18.

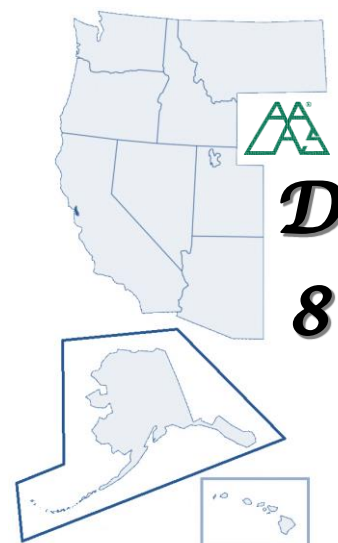
-Up to \$4,000 fiscal support was approved for the joint AALAS-FELASA working group on Health Monitoring in Fish Research. The funding will terminate December 31, 2016.

-The BOT approved as presented the 2016 Operating Budget and the 2016 Capital Asset Budget.

-Dr. Chandra Williams, Ms. Terri Swanson and Ms. Tonja Henze were approved as AALAS Foundation Board Directors-At-Large for three year terms, 2016-2018. The newly elected Directors' terms begin November 6, 2015, at the close of the National Meeting in Phoenix, Arizona, and end November 1, 2018, at the close of the National Meeting in Baltimore, Maryland.

The following *AALAS Policies & Procedures Manual (PPM)* revisions were approved:

- Section 4-16: Education and Training: Online Learning to increase the committee size from five members to seven.



- The AALAS Technician Publication Award criteria were revised to specify that recipients must be working as a technician or technologist at the time of submission for articles to be considered (Section 4-11: National Awards).
- The AALAS mailing list policies to include authorized mailing houses that sign and agree to comply with AALAS' mailing list agreement (Section 4-1: General).
- Section 4-11: National Awards to add to the committee structure the position of past chair.
- Section 4-2: Membership, to comply with the Ben Cohen Branch Education Fund (BCBEF) amendments approved during the June 26, 2015 BOT Summer Session.
- Section 4-10: Committees, Boards and Advisory Councils, to clarify who appoints sub-committee members and voting eligibility within the parent committee.
- Section 4-25: Nominations/Elections, to clarify that the petition requirement may be waived for candidates solicited by the Nominations Committee.
- Section 4-2: Membership, to clarify the process for international applications that lack a member sponsor.

The other big item which we presented at our D8 Membership Meeting in Phoenix was about the membership restructure proposal that has been put forth by the appointed Membership Ad-Hoc committee and an independent consultant. I have attached the complete proposal below and would love to hear all of your thoughts, concerns, and other feedback on this proposal so I can share it with all of the Trustees and Executive Committee so we can make the choices that best reflect the needs of AALAS members.

We also welcomed representatives from Allentown to our D8 Membership Meeting where they awarded the Ron Orta Humanitarian Award to Katherine Marshall. Congratulations on this well-deserved award!

At the end of the 2015 National Meeting, Morag Mackay finished her 6<sup>th</sup> and final year as our Trustee and District 8 transitioned to 1 district Trustee and the new At-Large Trustees. Morag served with honor and respect and her contributions have been invaluable.

As a district we will have a Trustee election in 2016. I encourage any of you to consider this position and would be happy to discuss the time commitments, travel, and duties with you.

It is my sincere pleasure to serve as your Trustee. Please call on me for any assistance you or your branches may need and provide me with feedback on any aspect of AALAS, so I can serve you to the best of my abilities.

Warm Regards,

**Amber Carte**

[acarte@fredhutch.org](mailto:acarte@fredhutch.org)

District 8 AALAS website: <http://www.swaebr.org/subsite/>

---

## **Membership Restructuring Proposal**

### **Background**

AALAS policy mandates the review of membership dues whenever membership revenue is less than 20% of the budget. Last year it was 18% which spurred a review. Furthermore, the AALAS Board realized that members may have different needs as there has been no change in the membership structure or dues in the last 13 years. As a result of these factors, the BOT appointed a Membership Ad Hoc Committee along with an outside consultant to evaluate the current membership model.

In order to understand the current needs of the membership, an electronic survey was sent via email in the late spring of 2015 to all National AALAS members to measure factors such as price sensitivity and interest in various benefits that AALAS offers. There was a 22% response to the electronic survey. Additionally, telephone interviews were conducted with members representing all of the various segments of AALAS. Suggestions from the interviewees included scale to accommodate the larger companies, flexibility to allow for different member levels and differentiation for various tiers of new benefits and separate levels.

### **Proposal**

AALAS is looking to align the membership structure with the needs of the members and long term growth of the Association; therefore, as a result several models were developed based on the survey feedback from National AALAS members. Please remember these are just proposals at this time and we are seeking input on them. Nothing has been selected and no changes have happened at this time.

### **Individual Membership**

- Tier 1 – Informational:
  - Digital access to *LAS Pro*
  - Restricted website access
  - Access to CompMed listserv
- Tier 2 – Basic, Access to Informational Member benefits PLUS:
  - Member discounts on certification, National Meeting, AALAS Learning Library (ALL), etc.
  - Member-only website access
  - *LAS Pro* (print or digital)
  - Access to TechLink
- Tier 3 – Voting, Access to Tier 2 benefits PLUS:
  - Voting rights
  - JAALAS subscription
- Tier 4 – Partner, Access to Tier 3 benefits PLUS:
  - *Comparative Medicine* subscription
  - Leadership Directory
  - Access to Partner e-community and/or VIP lounge/event at National Meeting

### **Institutional Membership**

One of the most important feedback items received from more than 70% of respondents was that their AALAS national dues were fully covered by their employer. Institutions were interested in the volume discount approach. Therefore, 2 options were developed with flexibility and scalability approach in mind.

- Option 1 – Provides a deeper discount as more members are brought in. For example a place with 50+ employee members would receive a greater discount than one with 10.
- Option 2 – Institutional membership model remains as it is but would be updated to include for any new tiers and costs established with the individual memberships.

**Commercial Membership** - The model includes two tiers of Commercial membership: Base and Premium.

- Base Membership Benefits:
  - One Level 3 membership
  - Two Level 2 memberships
  - Booth discount at the National Meeting
  - Registration discount for the National Meeting
  - Opportunity to rent the membership mailing list
  - One priority point for booth location at the National Meeting
- Premium Membership Benefits:
  - One Level 4 membership
  - Two Level 3 memberships
  - Five Level 2 memberships
  - Higher booth discount at the National Meeting
  - Registration discount for the National Meeting
  - Opportunity to rent electronic membership list up to three times per year
  - Opportunity to rent the membership mailing list
  - Five priority points for booth location at the National Meeting
  - Access to VIP lounge/event at National Meeting
  - Highlighted listing in the National Meeting program and app

Nothing has been agreed or voted upon at this time; however, the AALAS Board of Trustees, specifically me, is looking for your feedback on these models we are proposing for you. Please feel free to send your comments to me at [acarte@fredhutch.org](mailto:acarte@fredhutch.org) and I will compile them all and share them with the rest of the Board. I will be sure to pass along new information as it is available.

Respectfully,  
Amber Carte  
District 8 Trustee

# Have you been to the Washington Branch AALAS Learning Portal?



## Washington Branch AALAS

dashboard resources **catalog**

Enter your keywords and click search...

Search



### Aseptic Technique in Rodent Surgery

These eight short video tutorials serve as a comprehensive guide to help research workers apply best practice in aseptic surgical techniques in laboratory rodents. The material was developed by Newcastle University with the support of the Institute of Animal Technology and t...[read more](#)

Rate



Content

8 modules

Enroll in Course



### Handling and Administration of Substances in Mice and Rats

A series of short video tutorials to assist research workers develop their skills in handling and the administration of substances to laboratory animals. The material was developed by Newcastle University with the support of the Institute of Animal Technology and the NC3Rs. ...[read more](#)

Rate



Content

11 modules

Enroll in Course

### Quick Links



Catalog



Messages



Questions

### August 2015

sun	mon	tue	wed	thu	fri	sat
						1
2	3	4	5	6	7	8
9	10	11	12	13	14	15
16	17	18	19	20	21	22
23	24	25	26	27	28	29
30	31					

[View Larger](#)

Set-up your **FREE** account [here](#) and enjoy access to courses on Aseptic Technique in Rodent Surgery, Handling and Administration of Substances in Mice and Rats, and access to an eModule developed by FLAIR E-LEARNING (UK) providing an introduction to laboratory animal anesthesia. Later this year expect to see links to free webinars on topic such as safety, IACUC, AAALAC, and laboratory animal biotechnology.

The branch launched a new feature in the [portal](#) you will find very handy - you can now track **all** of your CEUs in the Washington Branch AALAS Learning Portal, even those earned outside of the portal. That makes it really easy to see where you stand when renewing your "R" for certification or during performance reviews.

Website: [wbaalas.learnupon.com](http://wbaalas.learnupon.com)

Early next year the branch will offer self-paced ALAT study courses through the Learning Portal with quizzes, worksheets, videos, games and access to a personal eTutor to help technicians earn their first certification. You will also see blended LAT and LATg study courses too. It's going to be a big year for technician learning in 2016!

Access to the Washington Branch AALAS Learning Portal will become a **WBAALAS members-only benefit starting in 2016**, so be sure to sign up using the link above and [tell us](#) what you'd like to see added to the catalog.

## WBAALAS Member Highlights

**Congratulations to our WBAALAS member D.R. who recently earned his ALAT certification!**



**Q: What was your experience using the WBAALAS Learning Portal to study for your certification?**

**A:** I used the WBAALAS Learning Portal, it was amazing! All I had to do was study and follow the lesson plan which was great since I'm a really busy guy.

**Q: Why did you want to earn your certification from AALAS?**

**A:** I really want to increase my job knowledge in this field.

**Q: Would you recommend earning a certification from AALAS to other members of WBAALAS?**

**A:** I recommend anyone in this field soon as your Eligible start studying. All you need is HS degree or/GED, and one year of lab animal work experience. Then you can take the ALAT.

**Q: Anything else you would like to share with our membership about your experience?**

**A:** Amanda K. did such a great job helping me pass the certification.

*Again, congratulations on your hard work and success!!!*

## WBAALAS Member Highlights

### Congratulations to our WBAALAS member Katie B. who recently earned her ALAT certification!

**Q: What was your experience using the WBAALAS Learning Portal to study for your certification?**

A: This tool was great because it kept me on track and studying 2 chapters a week, so I was able to get done in a pretty timely manner too.

**Q: Why did you want to earn your certification from AALAS?**

A: I wanted to expand my knowledge of Laboratory Animals as well as get certified, so I could be viewed as a more valuable employee.

**Q: Would you recommend earning a certification from AALAS to other members of WBAALAS?**

A: Of course! It is educational and fun to expand your knowledge on this stuff, and who doesn't want to know the gestational period of a cow?

**Q: Anything else you would like to share with our membership about your experience?**

A: It was great, and I really appreciated Amanda's continued encouragement and help during the whole online class to make sure I was getting the material and not getting behind. It was a lot of fun.



## News in ALN Online Magazine

### [Novel Ergonomic Device for Rodent Water Bottle Cap Removal](#)

Check out the article linked above to see a great DIY project completed by the animal care technicians at the University of California, Berkley. Be inspired to create your own problem solving tool at your facility!

Ferrecchia, Christie, DVM, and Rodger Van Andel, DVM. "Novel Ergonomic Device for Rodent Water Bottle Cap Removal." *ALN*. N.p., 9 Sept. 2015. Web. 07 Dec. 2015.

### [Improved Workflow and Ergonomic Safety Practices in Soiled Cagewash Operations](#)

Doughman, Elizabeth, Editor-In-Cheif. "Improved Workflow and Ergonomic Safety Practices in Soiled Cagewash Operations." *ALN*. N.p., 11 Sept. 2015. Web. 07 Dec. 2015.

## News About Lab Animals

### AALAS Response to Microsoft's "Upgrade Your World" Selection

*"The Microsoft **"Upgrade Your World"** contest recently awarded a \$500,000 grant to the Beagle Freedom Project (BFP). Upon learning of this award, AALAS immediately contacted Microsoft's senior management and board of directors to express disappointment and concern. The text of the letter is available [here](#). If you wish to contact Microsoft, you may use this letter as a template. In subsequent conversations with Microsoft, arrangements have been made to include the [AALAS Foundation](#) as a Featured Giving partner."*

-AALAS

## Publish Your Work

Submit your idea, article or photo of your pet to Laboratory Animal Science Professional (LAS Pro). Las Pro is an online and print magazine published by AALAS.

This is the year to submit if you always wanted to and yet never found the time. Review the author submission guidelines [here](#).

Are you interested in participating in a local **Magazine Club**? Please contact [Newsletter@wbaalas.org](mailto:Newsletter@wbaalas.org) to help start the discussion.

A magazine club is similar to a journal club. Participants read a shared article and discuss the material in a group.

## Vivarium Manager Roundtable

WBAALAS has started a Vivarium Managers Roundtable as a forum for managers to interact with their peers. It provides an opportunity to share your methods and learn some new ones. The meetings are held every 3 months and held at a different institution each time. The next meeting will take place on January 14<sup>th</sup> at Benaroya Research Institute at 12pm, lunch will be provided. If you are a manager of a local facility and would like to attend, please RSVP to [roundtable@wbaalas.org](mailto:roundtable@wbaalas.org). Seating is limited.



# COMMERCIAL MEMBERS



Britz & Company



## INSTITUTIONAL MEMBERS

[Allen Institute for Brain Science](#)

[Benaroya Research Institute at Virginia Mason](#)

[Bloodworks Northwest](#)

[Center for Infectious Disease Research](#)

[Fred Hutchinson Cancer Research Center](#)

[Infectious Disease Research Institute](#)

[Northwest Association for Biomedical Research](#)

[Novo Nordisk, Inc.](#)

[Seattle Genetics, Inc.](#)

[ZymoGenetics, a Bristol-Meyers Squibb Company](#)